

# **A MAZDA PISTON**

Leading Manufacturer of Piston & Rings



the **Quality** you can **TRUST**

**Manufacturer of Engine Components**

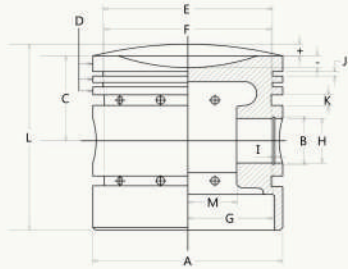
**Size Range :- Piston (30-250mm), Piston Ring (30-300mm)**

**Production Capacity :- 0.5 Million Pieces per annum**

## PISTON

Application of our alloy piston with superior mechanical properties enables Klintek Engineers to attain balance of weight & strength. This can sustain high inertia, thermal load & intense pressure, as demanded by today's high engine performance requirements.

Highly magnificent piston in heart of the engine will satisfy most rigorous applications.



- A Cylinder Bore Dia
- B Piston Pin Dia
- C Compression Height
- D Ring Land
- E Comp. Ring Groove Dia
- F Oil Ring Groove Dia
- G Circlips Span
- H Circlip Groove Dia
- I Circlip Width
- J Comp. Ring width
- K Oil Ring Width
- L Piston Length
- M Distance between the bosses
- + Crown Height



## PISTON RINGS

Pistons Rings are produced to a very strict standard as it is an important component for reconditioning engines.

### Top Compression Ring

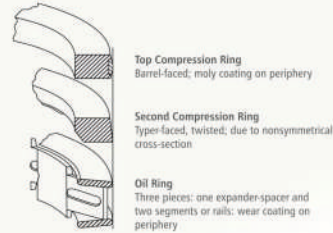
Its primary function is to seal off combustion chamber and crankcase against each other. The compression rings are to prevent combustion gases from getting into the crankcase from the combustion chamber.

### Scraper rings

Scraper rings combine the function of the compression rings and the oil control rings; so in essence they keep combustion gases away from the crankcase and wipe off excess oil on the cylinder wall.

### Oil Rings

The task of the oil control rings is to scrape off the excess oil from the cylinder wall to limit and to limit entry of the lubricating oil into the combustion chamber as much as possible. The aim is to achieve low oil consumption and sufficient lubrication of moving parts



## QUALITY

The company was able to achieve consistent growth and industry leadership through its visionary and qualitative response to the changing consumer and market demands.

*“Explaining price is easier than apologising for quality forever”*

### THE QUALITY SYSTEM



#### 1 Metallurgy & Heat treatment

The quality of the piston starts with its metallurgy. Using pure Aluminium (LM13) material and well-equipped foundry can serve the best quality. And with advanced heat treatment process, we get proper hardness and grain structure.



#### 2 Advanced machinery

Every operation is carried out in highly precise CNC, VMC and SPM machines for better surface finish and accuracy.

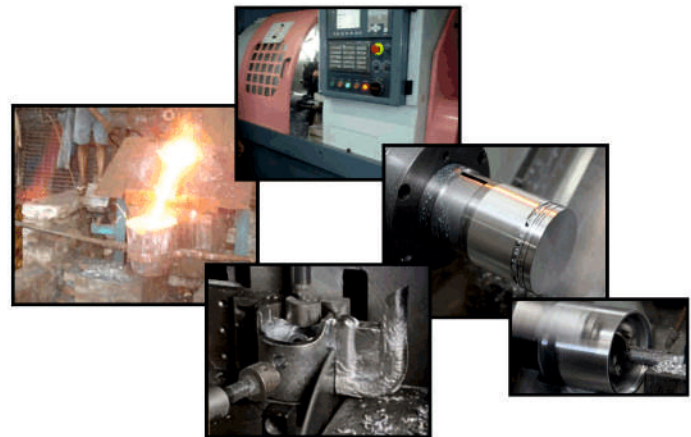


#### 3 Inspection & QC

QC begins with the basic raw material itself. Castings are tested for chemical composition & physical properties in well equipped lab. These castings are also analysed for their hardness, micro-structure and tensile. Floor inspection is measured with precision measuring instruments.



## MANUFACTURING FACILITIES



### Quality Control





**Internal Combustion Engine**

ANDORIA  
BAJAJ  
CUMMINS  
COMET  
CHINA ENGINE  
EICHER  
ESCORTS  
FIAT  
FORD  
HINO  
HONDA  
HYUNDAI  
JOHN DEERE  
KIRLOSKAR  
KUBOTA  
LADA  
GREEVES  
MACK  
MAHINDRA  
MAN  
SCANIA  
SHAKTIMAN  
TATA  
TOYOTA  
VOLVO  
YAMAHA  
YANMAR



**Gasoline Engine**

MK-12 (NEW)  
MK-12 (OLD)  
MK-20  
MK-10  
MK-25 (OLD)  
MK-25 (NEW)  
HONDA GK-200  
HONDA GK-100



**Air & Refrigeration Compressors**

ATLAS COPCO  
ELGI  
INGERSOLL RAND (OLD)  
INGERSOLL RAND (NEW)  
KIRLOSKAR  
KG KHOSLA  
CARRIER/VOLTAS  
ACCEL SABROE  
BITZER  
VILTER  
MYCOM  
YORK  
BOCK  
CHINA COMPRESSOR  
COPELAND



**Knapsack power sprayer**

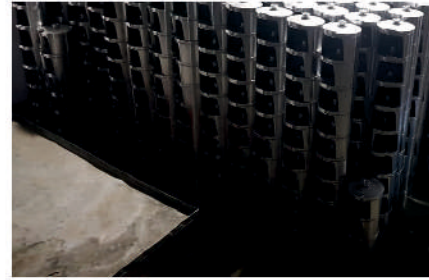
L-35 JLO  
L-34 VILLIERS  
TU-26 CHINA ENGINE  
HONDA GX-35  
I.E-34 2 STROKE  
139F CHINA 4  
STROKE



**4-Stroke (2 Wheeler)**

Bajaj  
TVS  
HONDA  
HERO  
PULSAR  
APACHE  
ACTIVA HET  
SPLENDAR  
YAMAHA

Custom Manufacturing



**MAZDA PISTON**  
Leading Manufacturer of Piston & Rings

P-56 Palika Nagar Nunhai Road,  
Agra 282006 Utter Pradesh  
(India)

M No. 09458816381  
7017662075

Mail Id : - mazda.pistonring@gmail.com  
aanyautomotives@gmail.com

Web:- [www.mazdapiston.com](http://www.mazdapiston.com)

## DIESEL ENGINE/GASOLINE

Model /type	Piston Dia (mm)	Ring (mm)	Piston pin (mm)	REMARK	Model /type	Piston Dia (mm)	Ring (mm)	Piston pin (mm)	REMARK
<b>KIRLOSKAR</b>					<b>COMET</b>				
VERSA	74	2.5	TC	20	Comet 76	76	2.51	TC	28
		2.5	Comp						
		5	SOR						
KV (ROCKET ENGINE)	76	2.5	TC	28	Comet 80	80	5.01	SOR	30
		2.5	Comp						
		5	SOR						
AV-1, 16.5:1,553cc, 6.6HP, 16.5:1,1106cc, 13.2HP	80	2.38	TC	30	Comet 85	85	4.76	SOR/SL	30
		2.38	Comp						
		2.38	Comp						
JV-1 IKARUS D2356HMN	85	2.38	TC	30	<b>CHINA ENGINE</b>				
		2.38	Comp						
		2.38	Comp						
TV-2, 17.5:1, 662cc, 7.5HP, 17.5:1, 1324cc, 15HP,	87.50	2.38	TC	30	China CD-170	70	4.76	SOR/SL	24--56
		2.38	Comp						
		4.74	SOR						
TV-1, 17.5:1, 662cc, 7.5HP, 17.5:1, 1324cc 15HP	87.50	2.38	TC	30	China CD-180	80	2	TC	23--63
		2.38	Comp						
		2.38	Comp						
KOLAPUR	87.50	2.38	TC	30	China R-170	70	2.5	TC	24--56
		2.38	Comp						
		4.76	SOR/SL						
KIRLOSKAR AJEET	95	3	TC	30	China SWAN-170	70	2.5	TC	24--56
		3	SCR						
		3	Comp						
		5	SOR						
		5	SOR/SL						
HA (DEUTZ)	100	3	TAPER TC	35	China CD-175	75	2	TC	23--63
		2.5	Comp						
		2.5	SCR						
		5	SOR						
KIRLOSKAR 102MM	102	2.5	TC	35					
		2.5	Comp						
		2.5	SCR						
		4.5	SOR						
		4.5	SOR/SL						
KIRLOSKAR 102MM (USHA TYPE)	102	3	TC	35					
		3	Comp						
		3	SCR						
		5	SOR/SL						

### KNAPSACK POWER SPRAYER /BRUSH CUTTER

Model /type	Piston Dia (mm)	Ring (mm)	Piston pin (mm)	REMARK
L-35 JLO	35	1.5	COMP	9--28
		1.5	COMP	
L-34 Villiers	35	2.38	COMP	9.50-28
		2.38	COMP	
TU-26 China Engine	33	1.5	COMP	8-25.5
		1.5	COMP	
Honda GX-35	35	1	TC	8-25.5
		1	COMP	
		2.5	M-TYPE	
I.E 34 2 stroke with 1.2 mm ring set	34	1	TC	8-25.5
		1	COMP	
		2.5	M-TYPE	
139F China 4 Stroke	39	1	TC	8-25.5
		1	COMP	
		2.5	M-TYPE	

### ROTTATION MOTOR/LD-4 DRILL MACHINE

Model /type	Piston Dia (mm)	Ring (mm)	Piston pin (mm)	REMARK
ATLAS COPCO 57.15	57.15	3.17	COMP	18
		3.17	COMP	
60	60	2.38	Comp	10
		2.38	COMP	
		4.75	SOR	
70	70	1.58	Comp	12
		1.58	COMP	
		3.17	SOR	
63.5	63.5	2	Comp	12
		2	COMP	
		4	SOR	

### GASOLINE/KEROSINE/PETROL ENGINE

Model /type	Piston Dia (mm)	Ring (mm)	Piston pin (mm)	REMARK
MK-12 (New Type)	55	-	TC	15.54-46
		-	Comp	
		-	SOR	
MK-20	68	-	TC	14-54
		-	Comp	
		-	M-TYPE	
MK-10	62	-	TC	13-52
		-	Comp	
		-	M-TYPE	
MK-12 (Old Type)	68	-	TC	14-54
		-	Comp	
		-	M-TYPE	
MK-25 (OLD Type)	70	-	TC	15.54-60
		-	Comp	
		-	Comp	
		-	SOR	
MK-25 (NEW Type)	70	-	TC	15.54-60
		-	Comp	
		-	Comp	
		-	M-TYPE	
Honda GK-200	67	-	TC	15-52
		-	Comp	
		-	M-TYPE	
Honda GK-100	52	-	TC	10--38
		-	Comp	
		-	M-TYPE	

### CHINA AIR COMPRESSOR

Model /type	Piston Dia (mm)	Ring (mm)	Piston pin (mm)	REMARK
42	42	2	Comp	12--33
		2	COMP	
		3	SOR	
47	47	1.5	Comp	12--39
		1.5	COMP	
		3	SOR	
51	51	2.38	Comp	12--42
		2.38	COMP	
		3.17	SOR	
65	65	2.5	Comp	14.50--57.30
		2.5	COMP	
		4	SOR	
95	95	3	Comp	20--81
		3	COMP	
		5	SOR	

AIR/REFREGERATION COMPRESSORS						
ELGI						
Model /type	Piston Dia (mm)	Ring (mm)		Piston pin (mm)	REMAKR	
ELGI	50	2	Comp	12-42		
		2	SCR			
		4	SOR			
		4	SOR			
ELGI	60	3	Comp	18-51		
		3	SCR			
		4	SOR			
		4	SOR			
ELGI	70	2.5	Comp	18-60		
		2.5	SCR			
		4	SOR			
		4	SOR			
ELGI	90	-	Comp	18-81		
		-	SCR			
		-	SOR			
		-	SOR			
ELGI	100	3.5	Comp	20-91		
		3.5	Comp			
		3.5	SCR			
		6	SOR			
		6	SOR			
KG-KHOSLA						
KG-KHOSLA	50	3	Comp	-		
		3	Comp			
		4	SCR			
		4	SOR			
KG-KHOSLA	70	3	Comp	-		
		4	SCR			
		4	SOR			
KG-KHOSLA	93.66	4	Comp	-		
		4	SCR			
KG-KHOSLA	105	4	SOR	-		
		4	SOR			
		3.5	Comp			
		3.5	Comp			
KG-KHOSLA 215/130 (KG-1)	215	5	Comp	35-120		
		5	Comp			
		5	SOR			
		5	SOR			
	130 (CAST IRON)		4	Comp	35-113	
4			Comp			
5			SOR			
KG-KHOSLA 225/130 (KG-2)	225	5	Comp	35-120		
		5	Comp			
		5	SOR			
		5	SOR			
	130 (CAST IRON)		4	Comp	35-113	
			4	Comp		
			5	SOR		
			5	SOR		

AIR/REFREGERATION COMPRESSORS					
Model /type	Piston Dia (mm)	Ring (mm)		Piston pin (mm)	REMARK
KIRLOSKAR					
KC 160 / GRASSO RC11,12	160	4	TC	50-148	
		4	Comp		
		4	SCR		
		8	SOR		
		8	SOR		
LOCAL/DELHI/PUNJAB/COIMBATORE COMPRESSOR					
RMP/METRO	57	-	Comp	15-48	
		-	Comp		
		-	SOR		
KND(2x1)	63	-	Comp	15.87-54.50	
		-	SCR		
		-	SOR		
KND(2x2)	63	-	Comp	15.87-54.50	
		-	SCR		
		-	SOR		
		-	SOR		
MASTER/(IN PUNJAB )	68 (5 TYPE IN COMPRESSOR HEIGHT)	-	Comp	16-54	
		-	SCR		
		-	SOR		
		-	SOR		
(IN PUNJAB )	68 (70MM HEIGHT)	-	Comp	17-54	
		-	SCR		
		-	SOR		
(IN PUNJAB )	73	-	Comp	17.45-63	
		-	SCR		
		-	SOR		
MASTER	85	-	Comp	19.05-73	
		-	SCR		
		-	SOR		
MASTER	90	-	Comp	19.05-73	
		-	SCR		
		-	SOR		
CAST IRON 70MM	70	-	Comp	19.05-73	
		-	SCR		
		-	SOR		
INGERSOLL RAND (IR) (OLD TYPE)					
2.5"	63.5	3.17	Comp	-	
		3.17	Comp		
		3.17	SOR / M- TYPE		
		3.17	SOR / M- TYPE		
3.0"	76.2	4.76	Comp	-	
		4.76	Comp		
		4.76	SOR / M- TYPE		
		4.76	SOR / M- TYPE		
4.0"	101.6	4.76	Comp	20.60	
		4.76	Comp		
		4.76	SOR / M- TYPE		
		4.76	SOR / M- TYPE		
5.0" (T-LINE)	127	6.35	Comp	30.12	
		6.35	Comp		
		6.35	SOR / M- TYPE		
		6.35	SOR / M- TYPE		
5.0" (F-LINE)	127	6.35	Comp	25.30	
		6.35	Comp		
		6.35	SOR / M- TYPE		
		6.35	SOR / M- TYPE		
5.5"	139.7	6.35	Comp	30.12	
		6.35	Comp		
		6.35	SOR / M- TYPE		
		6.35	SOR / M- TYPE		

## INTERNAL COMBUSTION ENGINES

Model /type	Piston Dia (mm)	Ring (mm)	Piston pin (mm)	REMARK
VEHICLE (2,3,4 WHEELER)				
TATA ACE	75	2.00 (SG)	TC	-
		2	COMP	
		3	SL	
LUMBARDNI	78	2	TC	-
		2	COMP	
		2	COMP	
		4	SL	
MARUTI 800	68.5	-	TC	-
		-	COMP	
		-	M TYPE	
MARUTI ALTO	68.5	-	TC	-
		-	COMP	
		-	M TYPE	
TVS XL SUPER	46		TC	12--42
			TC	
APE URO-2	86	2	TC	20
		2	COMP	
		3,4	SL	
APE URO-3	86	2	TC	20
		2	COMP	
		3,4	SL	
PULSER 180CC	63.5	1	TC	17-48
		1	COMP	
		2.5	M TYPE	
HONDA ACTIVA	50	0.8	TC	
		0.8	COMP	
		2	M TYPE	
HET	50	0.8	TC	
		0.8	COMP	
		2	M TYPE	
HONDA SPLENDOR	50	0.8	TC	
		0.8	COMP	
		1.5	M TYPE	
BAJAJ BRAVO	57	1.5	TC	15--48
		1.5	COMP	
		---		